

# Accurate Methods for Fluid Flow: Multipoint Flux

## Scientific Achievement

- Development of accurate, locally conservative, multiscale discretizations for multiphase flow on complex geometries.

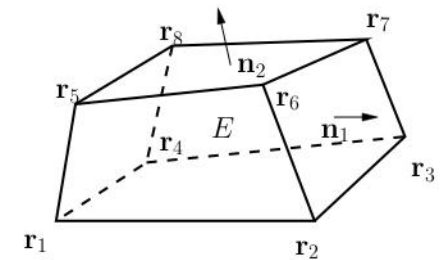
## Significance and Impact

- Can handle non-matching grids, full tensors, simplicial elements and distorted hexahedra; easy to implement.

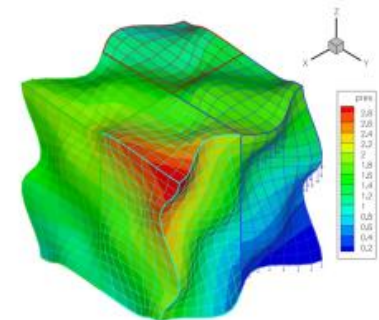
## Research Details

- Algorithm based on mixed finite elements; rigorous error estimates derived.
- Results extended to multiphase flow with gravity and capillary pressure curves.
- Modeled Frio CO<sub>2</sub> injection site.
- Can model nonplanar faults and fracture interfaces.

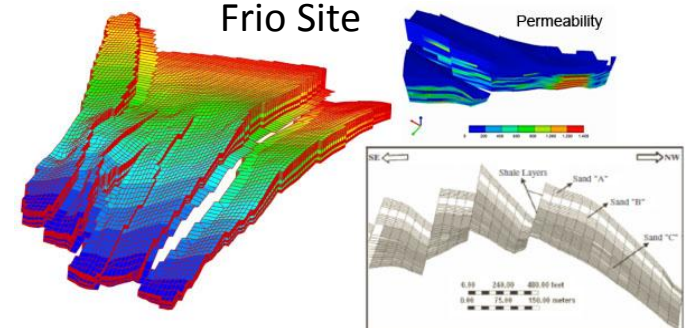
Distorted Hexahedra



Multiscale Discretizations



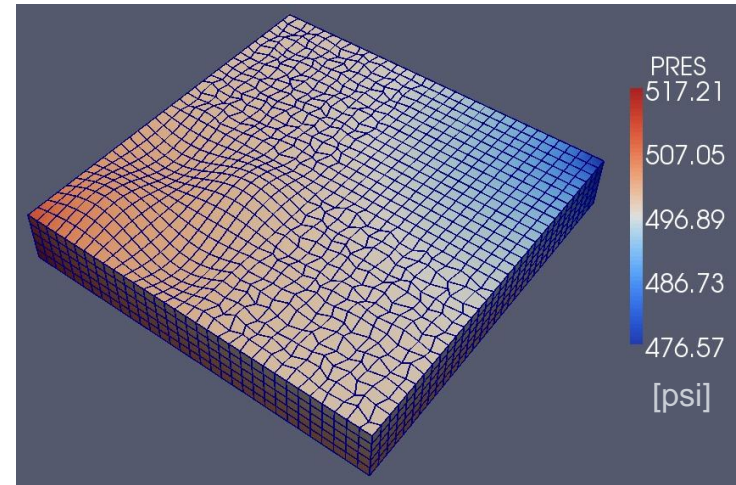
Frio Site



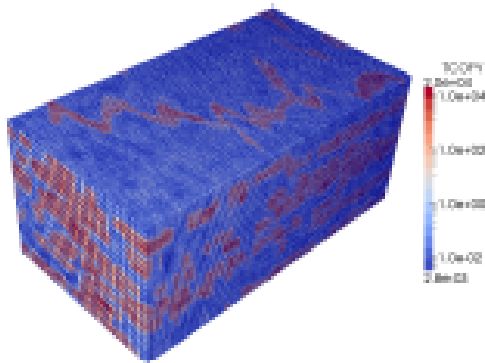
# Solver Performance: Multipoint Flux Method

## Coupled Symmetric and Non-Symmetric MFMFE Methods

- Symmetric method: for nearly cubic elements
- Non-symmetric method: for highly distorted hexahedral elements



SPE 10 permeability  
on highly perturbed  
hexahedral mesh with  
1.1M elements.



## Solver Performances for SPE 10 Benchmark

Symmetric multipoint flux

Solver	Iterations
HYPRE	27
SAMG	34
FASP	14
Trilinos ML	21-28

Non-symmetric multipoint flux

Solver	Iterations
HYPRE	42
SAMG	61
FASP	25
Trilinos ML	23-29



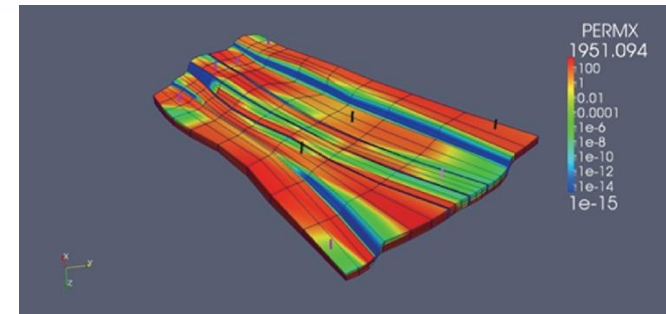
U.S. DEPARTMENT OF  
**ENERGY**

Office of  
Science

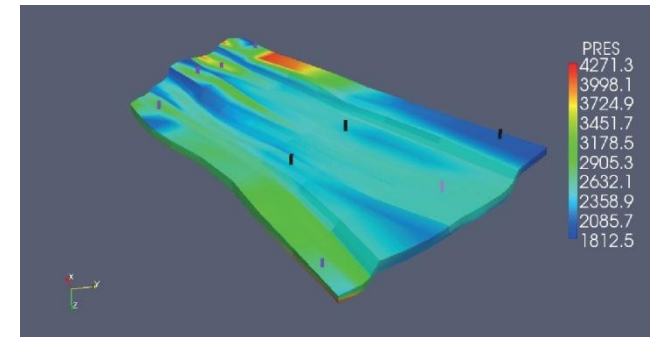


# Coupled Poroelasticity on a General Hexahedral Grid

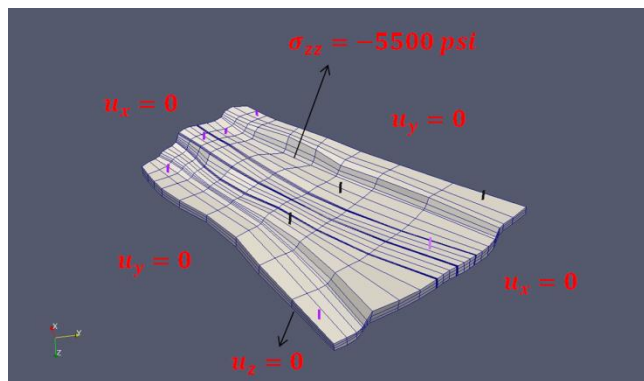
PARAMETER	QUANTITY	VALUE
$x$	x coordinate	$\in (-10.4, 8561.6)$ ft
$y$	y coordinate	$\in (68.8, 8822.9)$ ft
$z$	z coordinate	$\in (3796.9, 5436.2)$ ft
$T$	total simulation time	7.0 day
$\Delta T$	time step size	0.1 day
$P_0$	initial pressure	hydrostatic
$\rho_0$	reference fluid density	$56 \text{ lb}_m/\text{ft}^3$
$\eta$	fluid viscosity	1 cp
$c_f$	fluid compressibility	$4.0 \times 10^{-7} \text{ psi}^{-1}$
$\phi$	initial porosity	0.2
$k_{xx}, k_{yy}$	horizontal permeability	$\in (1.0 \times 10^{-15}, 1592)$ md
$k_{zz}$	vertical permeability	$0.1 k_{xx}$
$N_{inj}$	number of injection wells	6
$BHP_{inj}$	bottom hole pressure of injection wells	$\in (3300, 4400)$ psi
$N_{prod}$	number of production wells	3
$BHP_{prod}$	bottom hole pressure of production wells	2000 psi
$\sigma_{zz}$	vertical stress on reservoir top surface	-5500 psi
$E$	Young's modulus	$1.0 \times 10^6$ psi
$\nu$	Poisson's ratio	0.3
$\rho_s$	rock density	$165 \text{ lb}_m/\text{ft}^3$



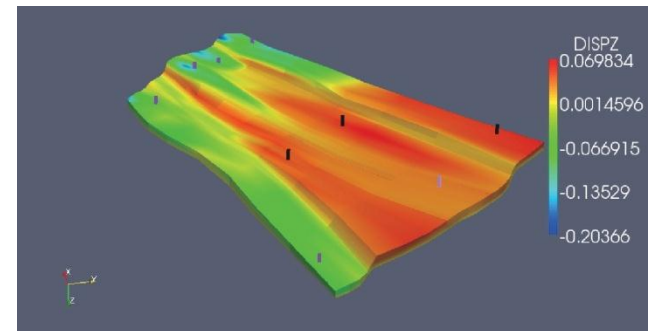
X-permeability Profile



Fluid Pressure at 7.0 Days



Mechanics Boundary Condition

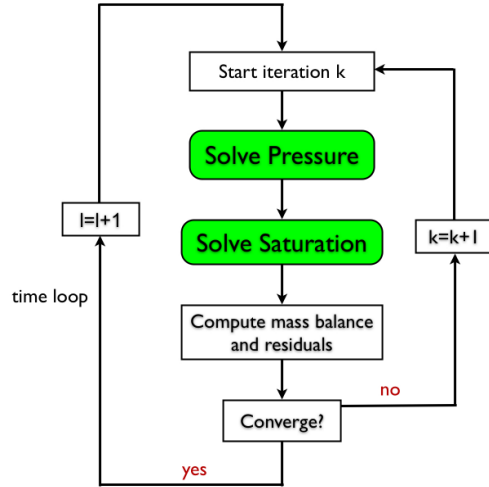


Vertical Displacement at 7.0 Days

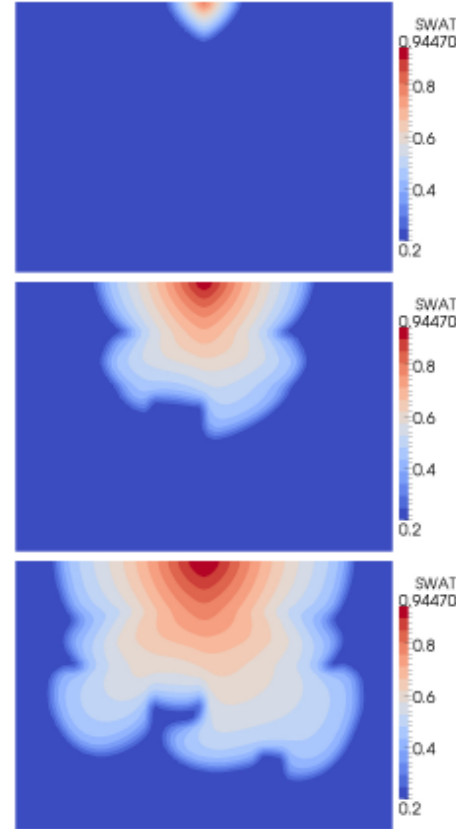


# Modeling Capillarity with the Multipoint Flux Method

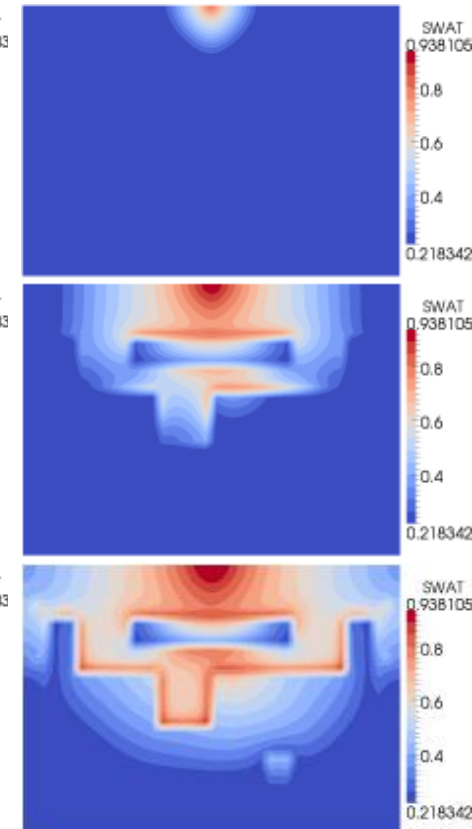
- Iterative coupling IMPES Scheme



Water Saturation without capillarity



Water Saturation with capillarity



- Brooks-Corey Capillary Pressure



$$k_{rw} = 0.7s_e^2 \quad k_{rn} = 0.5(1 - s_e)^2$$

$$p_c(s_e) = p_d s_e^{-\frac{1}{\lambda}}$$

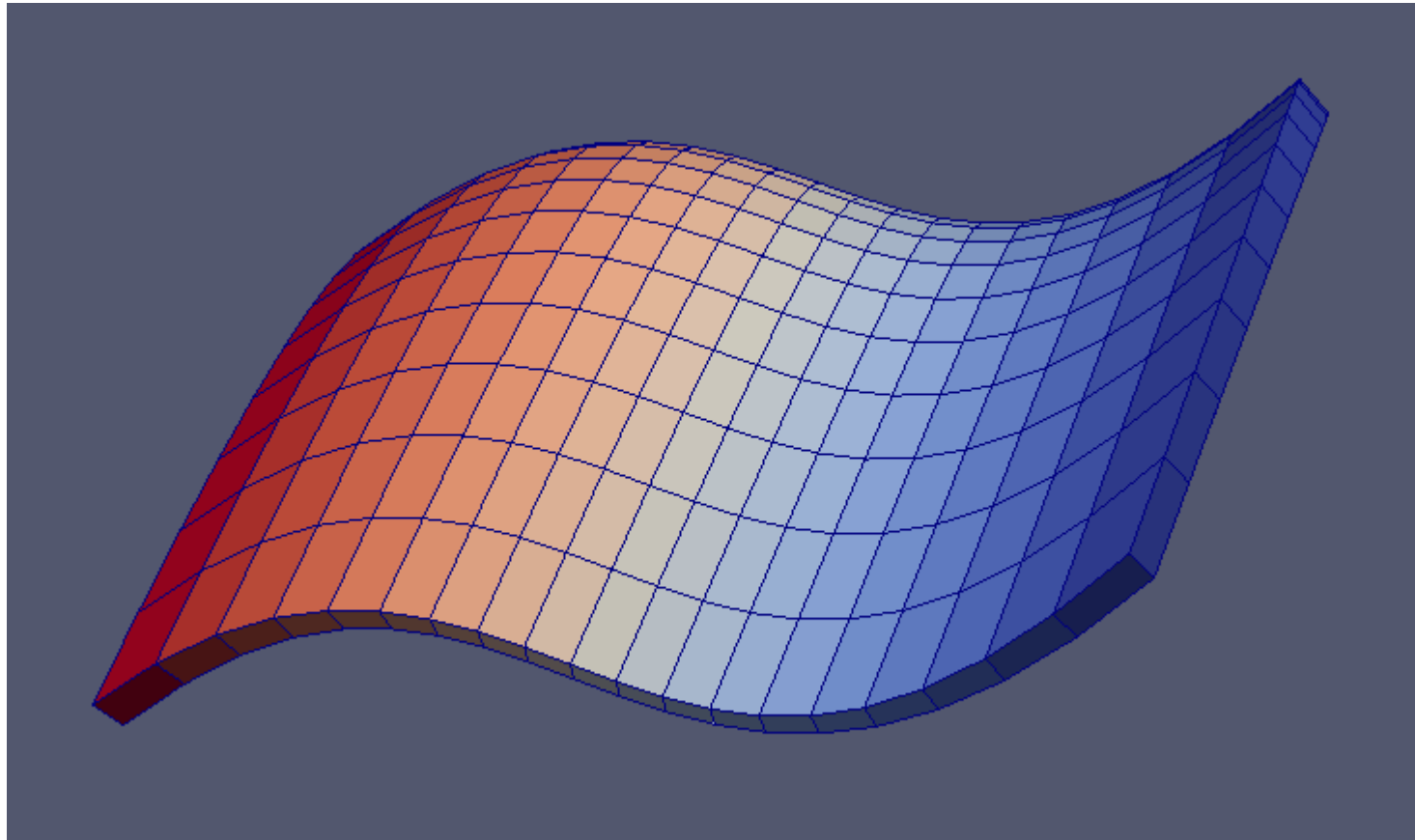
Media type	$p_d$	$\lambda$
<b>type 1</b>	135	2.49
<b>type 2</b>	37.7	3.86

$$s_e = \frac{s - s_{rw}}{1 - s_{rw} - s_{rn}}$$

$$s_{rw} = 0.2 \quad s_{rn} = 0.05$$

# Using NURBS to represent nonplanar interfaces

Example of using a Non-Uniform Rational B-Splines (NURBS) to represent nonplanar faults and fractures



U.S. DEPARTMENT OF  
**ENERGY**

Office of  
Science



TEXAS



Sandia  
National  
Laboratories



# References

1. M. Wheeler, G. Xue, and I. Yotov, Benchmark 3D: A multipoint flux mixed finite element method on general hexahedra, Proceedings of Finite Volumes for Complex Applications VI - Problems & Perspectives, Springer Proceedings in Mathematics, Vol. 4, 2011.
2. M. F. Wheeler, G. Xue, and I. Yotov, A Family of Multipoint Flux Mixed Finite Element Methods for Elliptic Problems on General Grids, Procedia Computer Science, Vol. 4, 2011, 918-927.
3. M. F. Wheeler, G. Xue, and I. Yotov, Local Velocity Postprocessing for Multipoint Flux Methods on General Hexahedra, ICES REPORT 11-04, The Institute for Computational Engineering and Sciences, The University of Texas at Austin, March 2011, Accepted by International Journal of Numerical Analysis and Modeling.
4. M. F. Wheeler, G. Xue, and I. Yotov, Accurate Cell-Centered Discretizations for Modeling Multiphase Flow in Porous Media on General Hexahedral and Simplicial Grids, SPE-141534-PP, SPE Reservoir Simulation Symposium, Woodlands, TX, February 2011, submitted to the SPE Journal.
5. M. F. Wheeler, G. Xue, and I. Yotov, A Multipoint Flux Mixed Finite Element Method on Distorted Quadrilaterals and Hexahedra, ICES REPORT 10-34, The Institute for Computational Engineering and Sciences, The University of Texas at Austin, August 2010, Accepted for Publication in Numerische Mathematik.
6. M. F. Wheeler, G. Xue, and I. Yotov, A Multiscale Mortar Multipoint Flux Mixed Finite Element Method, ICES REPORT 10-33, The Institute for Computational Engineering and Sciences, The University of Texas at Austin, August 2010, Accepted for Publication in Mathematical Modeling and Numerical Analysis.
7. M. F. Wheeler and G. Xue, Accurate Locally Conservative Discretizations for Modeling Multiphase Flow in Porous Media on General Hexahedra Grids, Proceedings of the 12th European Conference on the Mathematics of Oil Recovery - ECMOR XII, publisher EAGE, 2011.
8. M. F. Wheeler, T. Wildey, and G. Xue, Efficient Algorithms for Multiscale Modeling in Porous Media, Numerical Linear Algebra with Applications, Vol. 17, 2010, 771-785.
9. A. Mikelic, B. Wang, and M. F. Wheeler, Numerical convergence study of iterative coupling for coupled flow and geomechanics, Proceedings of the 13th European Conference on the Mathematics of Oil Recovery – ECMOR XIII, publisher EAGE, 2012.
10. A. Mikelic, M. F. Wheeler, Convergence of iterative coupling for coupled flow and geomechanics, Computational Geosciences, DOI 10.1007/s10596-012-9318-y.